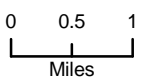


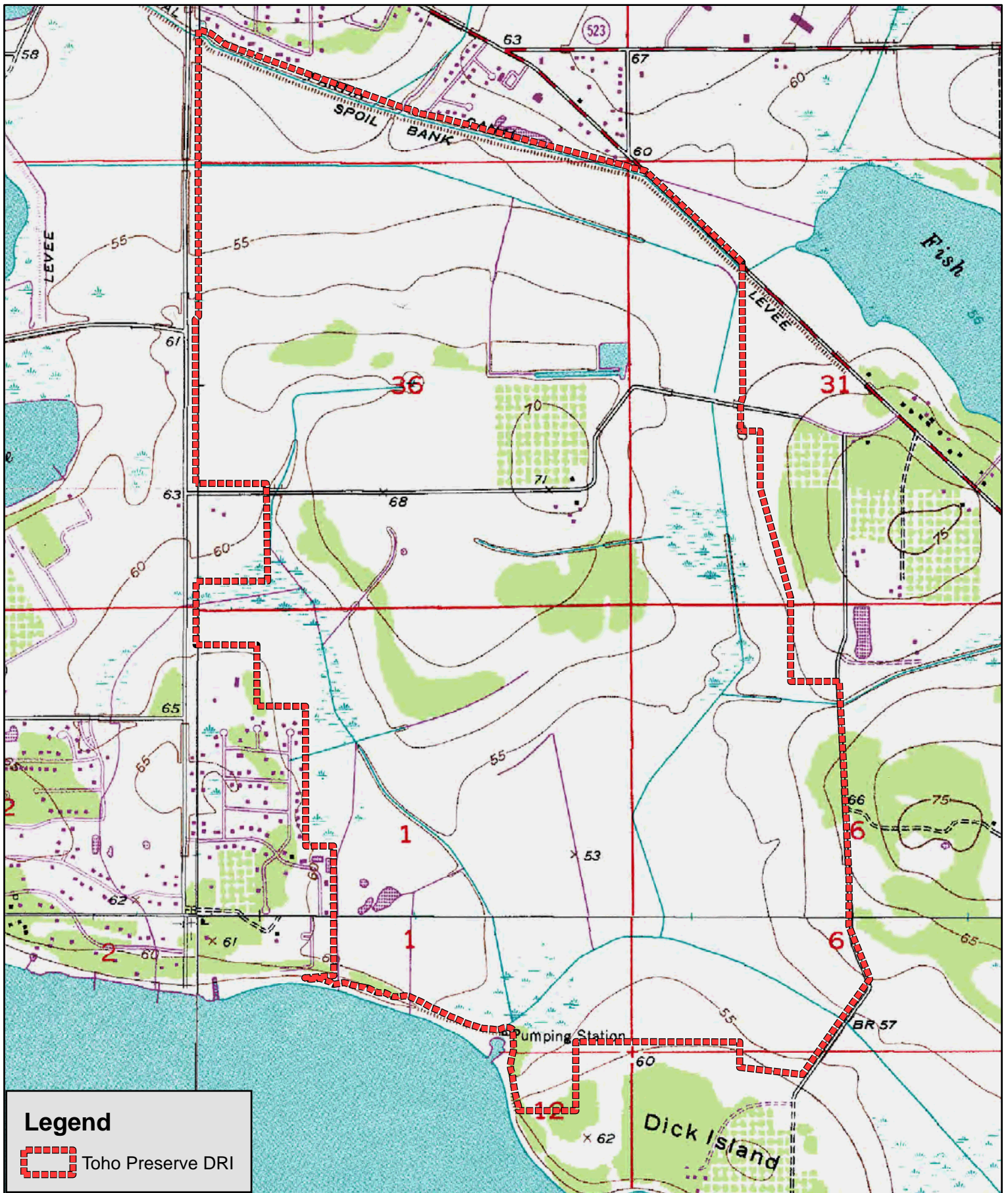
Toho Preserve DRI
 Osceola County, Florida
 Figure 1
 Location Map


2





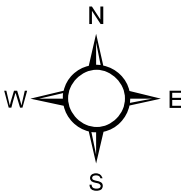
Legend
[Red dashed line symbol] Toho Preserve DRI



Legend
 Toho Preserve DRI

Bio-Tech Consulting Inc.
 Environmental and Permitting Services
 2002 E. Robinson St. Orlando, FL 32803
 Ph: 407-894-5969 Fax: 407-894-5970
 www.bio-techconsulting.com

Toho Preserve DRI
 Osceola County, Florida
 Figure 3
 USGS Topography Map



580 Meters
 BTC File #110-13
 Produced By: BMM
 Date: 8-21-08



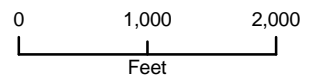
Legend

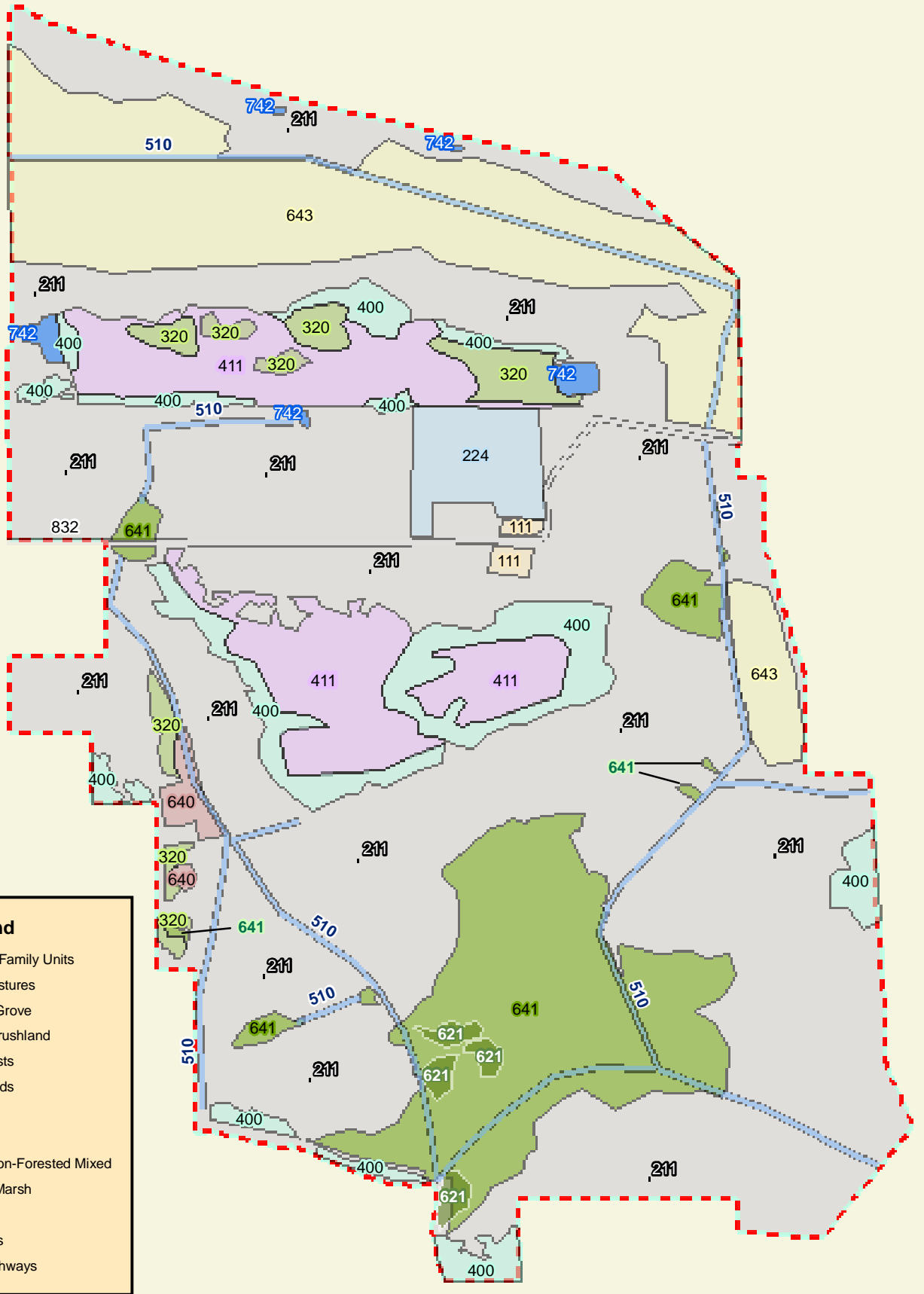
SOILS - Toho Preserve DRI

- 1. ADAMSVILLE SAND
- 5. BASINGER FINE SAND
- 6. BASINGER FINE SAND; DEPRESSIONAL
- 10. DELRAY LOAMY FINE SAND
- 14. HOLOPAW FINE SAND
- 15. HONTOON MUCK
- 16. IMMOKALEE FINE SAND
- 17. KALIGA MUCK
- 22. MYAKKA FINE SAND
- 24. NARCOSSEE FINE SAND
- 25. NITTAW MUCK
- 26. OLDSMAR FINE SAND
- 32. PLACID FINE SAND
- 34. POMELLO FINE SAND; 0 TO 5 PERCENT SLOPES
- 36. POMPANO FINE SAND
- 38. RIVIERA FINE SAND
- 39. RIVIERA FINE SAND; DEPRESSIONAL
- 40. SAMSULA MUCK
- 42. SMYRNA FINE SAND
- 44. TAVARES FINE SAND; 0 TO 5 PERCENT SLOPES
- 45. VERO FINE SAND
- 47. WINDER LOAMY FINE SAND

Toho Preserve DRI
Osceola County, Florida
Figure 4
Soils Map

2



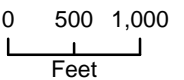


Legend

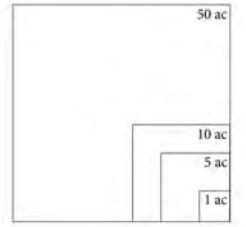
- 111 Fixed Single Family Units
- 211 Improved Pastures
- 224 Abandoned Grove
- 320 Shrub and Brushland
- 400 Upland Forests
- 411 Pine Flatwoods
- 510 Ditches
- 621 Cypress
- 640 Vegetated Non-Forested Mixed
- 641 Freshwater Marsh
- 643 Wet Prairie
- 742 Borrow Areas
- 832 Roads & Highways

Toho Preserve DRI
 Osceola County, Florida
 Figure 5
 FLUCFCS Map

2



1/2 Mile



Legend

- Community Center
- Residential
- Civic / Institutional
- Parks and Pedestrian Connections
- Passive Open Space
- Tree Preservation
- Wetlands
- Stormwater Ponds
- Neighborhood Center
- Cross Prairie Parkway Trail
- Pedestrian Pathway
- Emergency Access Easement to King's Highway
- 1 Public Amenity Access Area (Minimum 200' wide measured z the Right-of-Way)



Prepared For:

D.R. Horton, Inc.

Prepared By:

COURT & STREET PARTNERS

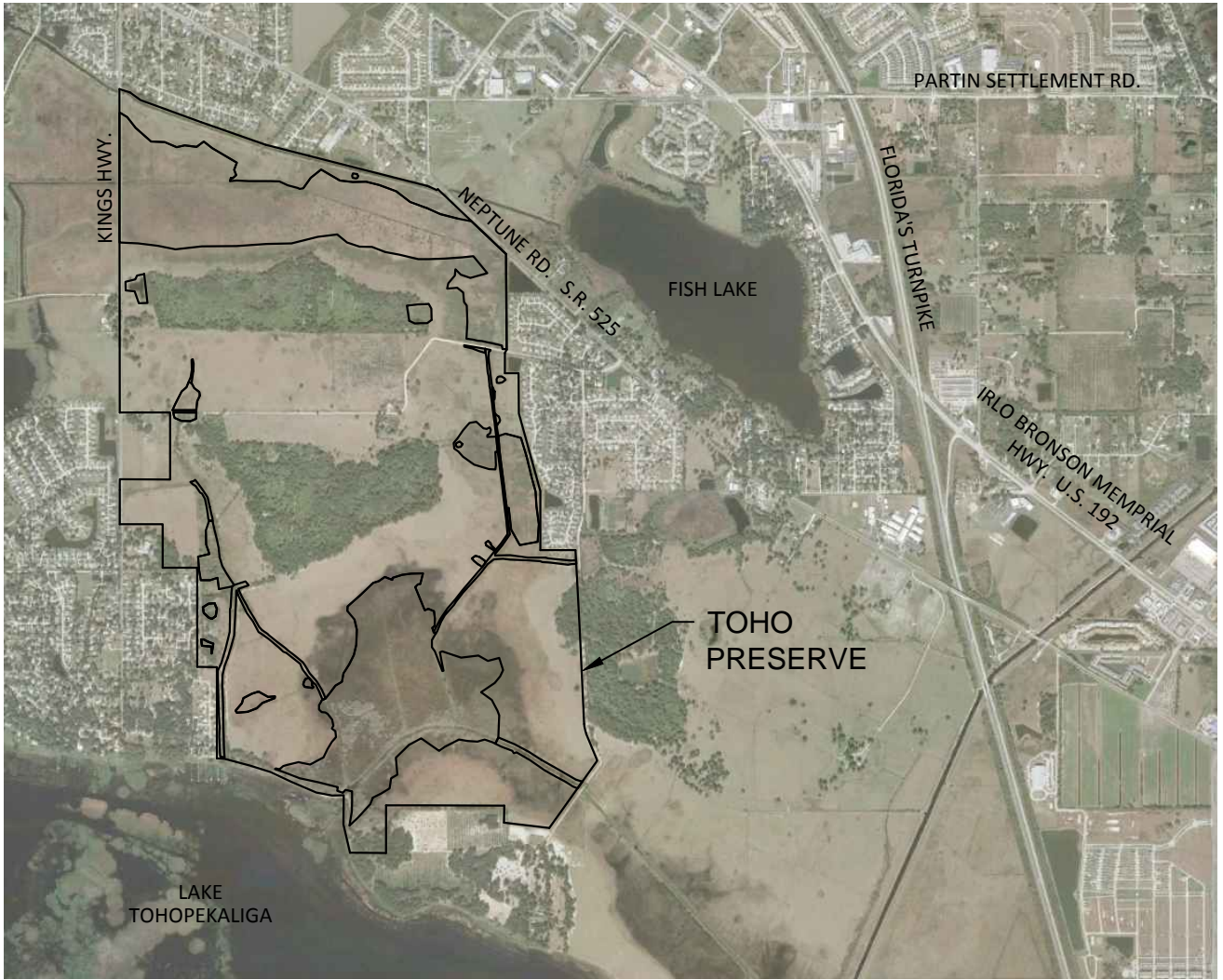
June 28, 2015

Map 1: Concept Plan

Kindred

Crawford County, Florida

VICINITY MAP

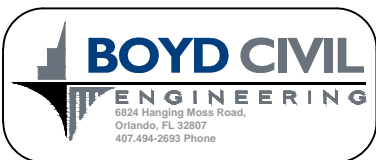


SHEET INDEX

SHEET NO.	SHEET TITLE
1	VICINITY MAP & SHEET INDEX
2	EXISTING OVERALL PLAN
3	PROPOSED OVERALL PLAN
4	WETLAND, SURFACE WATER, POND IMPACT TABLE
5	W-1 & S-5 PLAN
6	W-1 & S-5 TABLES
7	W-2 TO W-6 PLAN
8	W-2 TO W-6 IMPACT SECTIONS
9	W-2 TO W-6 TABLES
10	S-1 PLAN
11	S-1 TABLES
12	S-1 & S-2 IMPACT PLAN
13	S-1 & S-2 IMPACT SECTIONS

14	S-1 & S-2 IMPACT TABLES
15	W-7, W-8, S-3 & P-1 PLAN
16	W-7, W-8, S-3 & P-1 IMPACT SECTIONS
17	W-7, W-8, S-3 & P-1 TABLES
18	W-9, P-2 & P-4 PLAN
19	W-9 & P-2 IMPACT SECTIONS
20	W-9 WITH IMPACTS & P-2, P-4 TABLES
21	W-10 TO W-16 & P-3 PLAN
22	W-10 TO W-16 & P-3 IMPACT SECTIONS
23	W-10 TO W-16 & P-3 TABLES
24	S-4 PLAN
25	S-4 TABLE
26	S-4 IMPACT PLAN
27	S-4 IMPACT SECTIONS
28	S-4 IMPACT TABLE

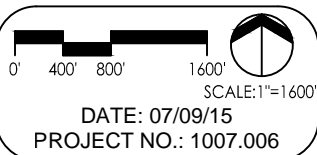
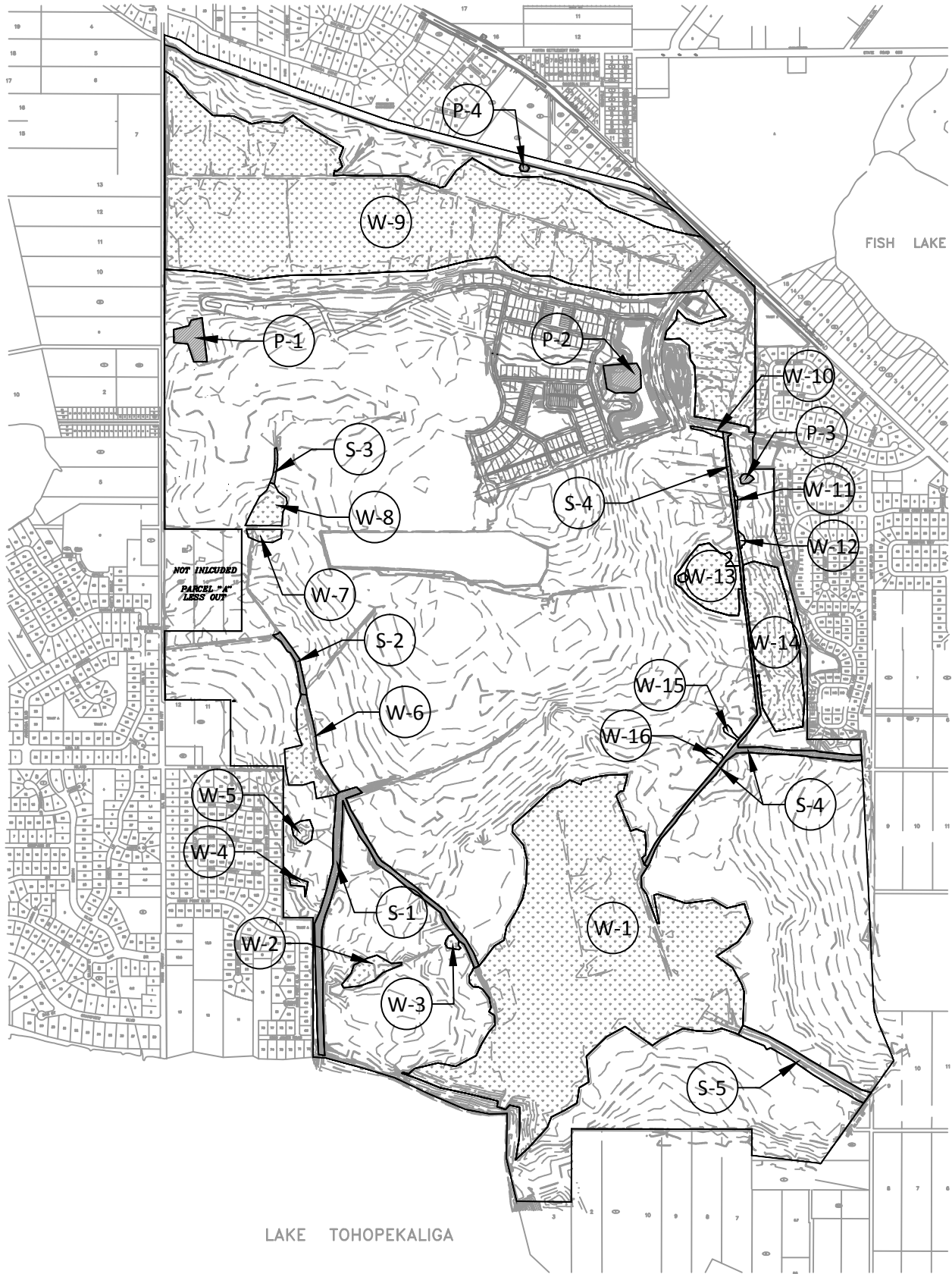
Plotted: July 9, 2015, 12:41:12 PM
 Z:\PROJECTS\1007.006 Toho Preserve - Kindred Master Plan Update\Master Wetland Plan\Toho Pres Wetland Corp Permit - Vicinity-Index.dwg



SCALE: 1"=3000'
 DATE: 07/09/15
 PROJECT NO.: 1007.006

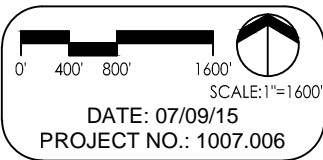
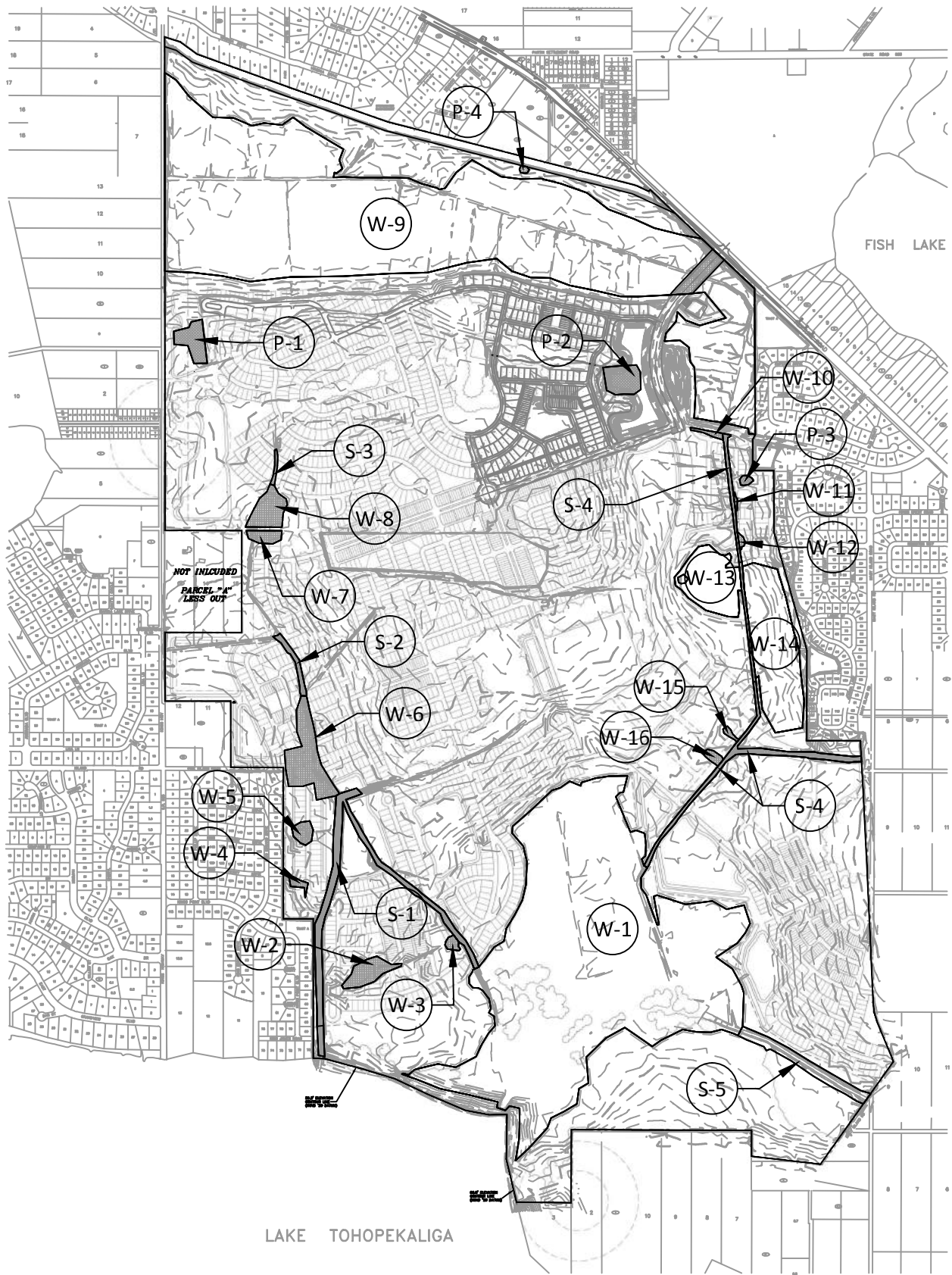
TOHO PRESERVE CORP PERMIT
 VICINITY MAP & SHEET INDEX

Plotted: July 9, 2015, 12:41:31 PM
Z:\PROJECTS\1007.006 Toho Preserve - Kindred Master Plan Update\Master Wetland Plan\Toho Pres Wetland Corp Permit - Plans.dwg



TOHO PRESERVE CORP PERMIT
EXISTING OVERALL PLAN

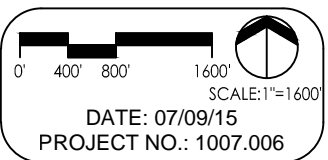
Plotted: July 9, 2015, 12:41:48 PM
Z:\PROJECTS\1007.006 Toho Preserve - Kindred Master Plan Update\Master Wetland Plan\Toho Pres Wetland Corp Permit - Plans.dwg



TOHO PRESERVE CORP PERMIT
PROPOSED OVERALL PLAN

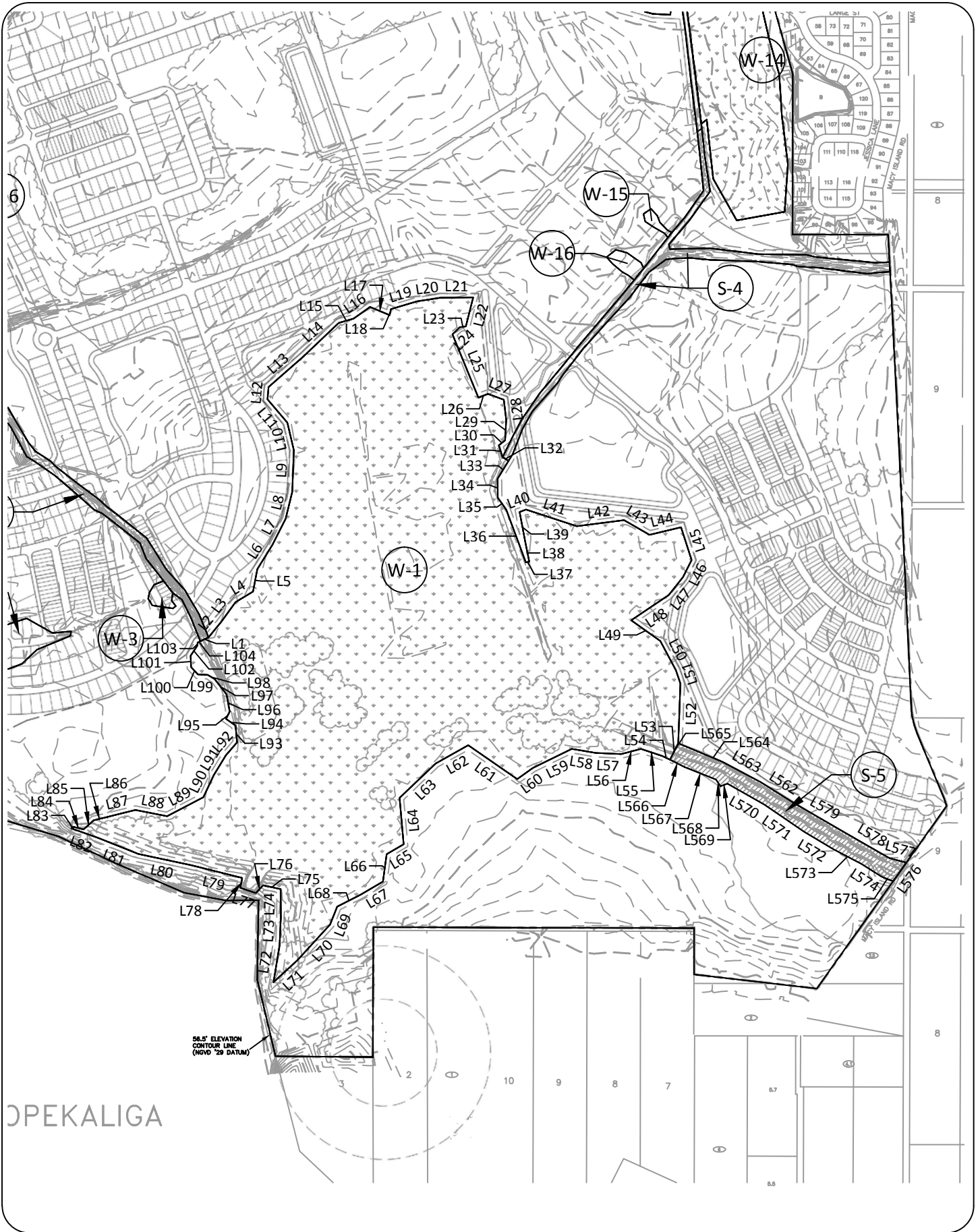
Plotted: July 9, 2015, 12:42:03 PM
 Z:\PROJECTS\1007.006 Toho Preserve - Kindred Master Plan Update\Master Wetland Plan\Toho Pres Wetland Corp Permit - Plans.dwg

WETLAND/SURFACE WATER/POND IMPACTS				
NUMBER	DESCRIPTION	AREA (AC)	PERIMETER (LF)	IMPACT (AC)
W-1	WETLAND	155.73	15975.68	0.00
W-2	WETLAND	2.55	1599.07	2.55
W-3	WETLAND	0.43	541.11	0.43
W-4	WETLAND	0.42	761.62	0.42
W-5	WETLAND	1.02	791.64	1.02
W-6	WETLAND	6.69	3118.49	6.69
W-7	WETLAND	1.08	961.50	1.08
W-8	WETLAND	3.02	1529.48	3.02
W-9	WETLAND	191.89	20911.16	2.40
W-10	WETLAND	0.35	826.18	0.35
W-11	WETLAND	0.12	457.10	0.12
W-12	WETLAND	0.21	480.55	0.21
W-13	WETLAND	8.63	2974.39	0.00
W-14	WETLAND	18.96	4422.47	0.00
W-15	WETLAND	0.24	517.28	0.24
W-16	WETLAND	0.50	605.82	0.50
S-1	SURFACE WATER	8.48	11164.03	7.96
S-2	SURFACE WATER	0.99	1668.78	0.99
S-3	SURFACE WATER	0.29	861.54	0.29
S-4	SURFACE WATER	6.31	13466.52	5.36
S-5	SURFACE WATER	4.26	3447.02	0.00
P-1	POND	2.43	1497.69	2.43
P-2	POND	2.68	1309.01	2.68
P-3	POND	0.28	415.04	0.25
P-4	POND	0.15	306.07	0.00
TOTAL		417.71	90609.24	38.99



TOHO PRESERVE CORP PERMIT
WETLAND / SURFACE WATER /
POND IMPACT TABLE

Plotted: July 9, 2015, 12:42:19 PM
Z:\PROJECTS\1007.006 Toho Preserve - Kindred Master Plan Update\Master Wetland Plan\Toho Pres Wetland Corp Permit - Plans.dwg



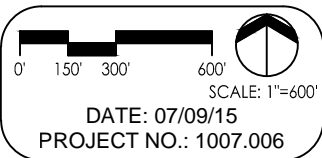
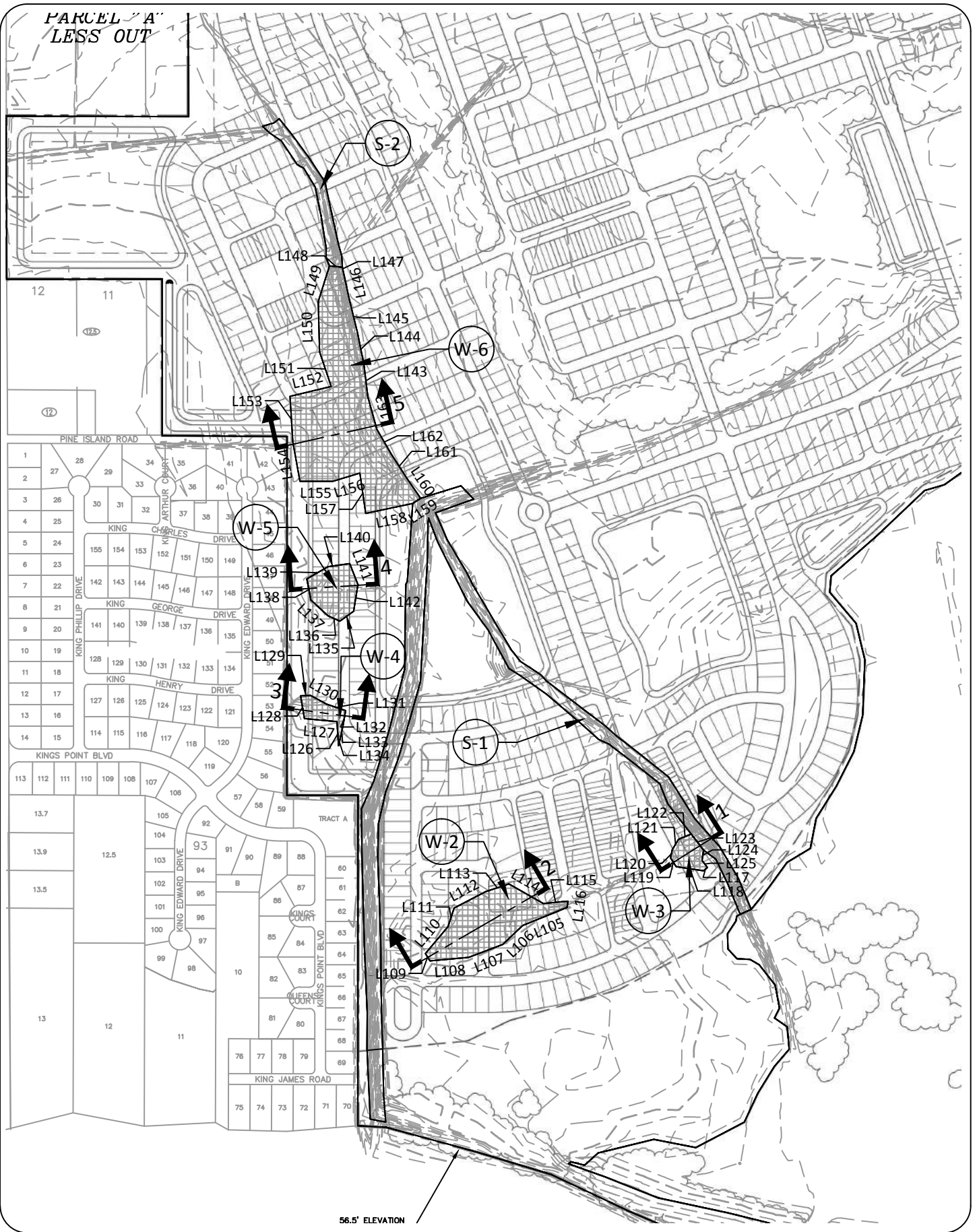
0' 200' 400' 800'
SCALE: 1"=800'
DATE: 07/09/15
PROJECT NO.: 1007.006

TOHO PRESERVE CORP PERMIT
W-1 & S-5 PLAN

5

PARCEL "A"
LESS OUT

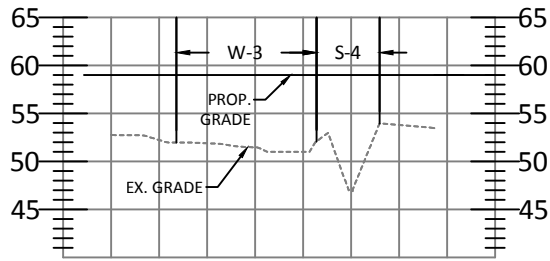
Plotted: July 9, 2015, 12:42:51 PM
Z:\PROJECTS\1007.006 Toho Preserve - Kindred Master Plan Update\Master Wetland Plan\Toho Pres Wetland Corp Permit - Plans.dwg



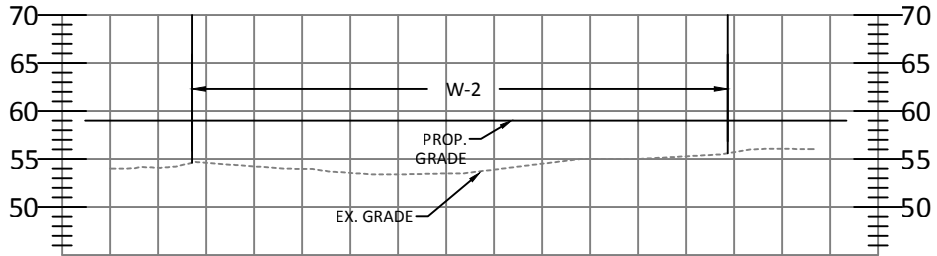
TOHO PRESERVE CORP PERMIT
W-2 TO W-6 PLAN

7

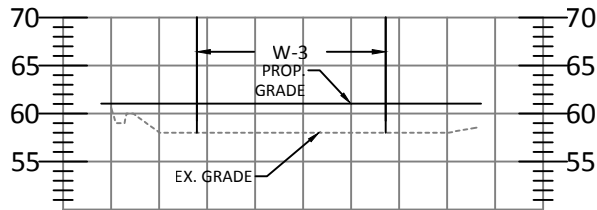
Plotted: July 9, 2015, 12:43:05 PM
Z:\PROJECTS\1007.006 Toho Preserve - Kindred Master Plan Update\Master Wetland Plan\Toho Pres Wetland Corp Permit - Plans.dwg



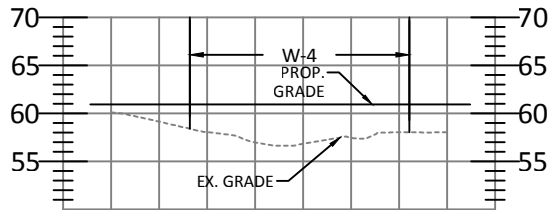
SECTION - 1



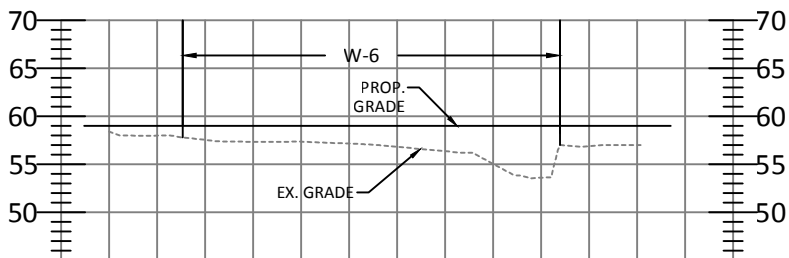
SECTION - 2



SECTION - 3

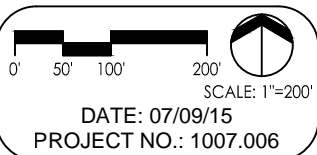
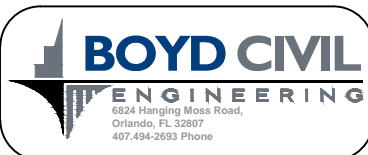


SECTION - 4



SECTION - 5

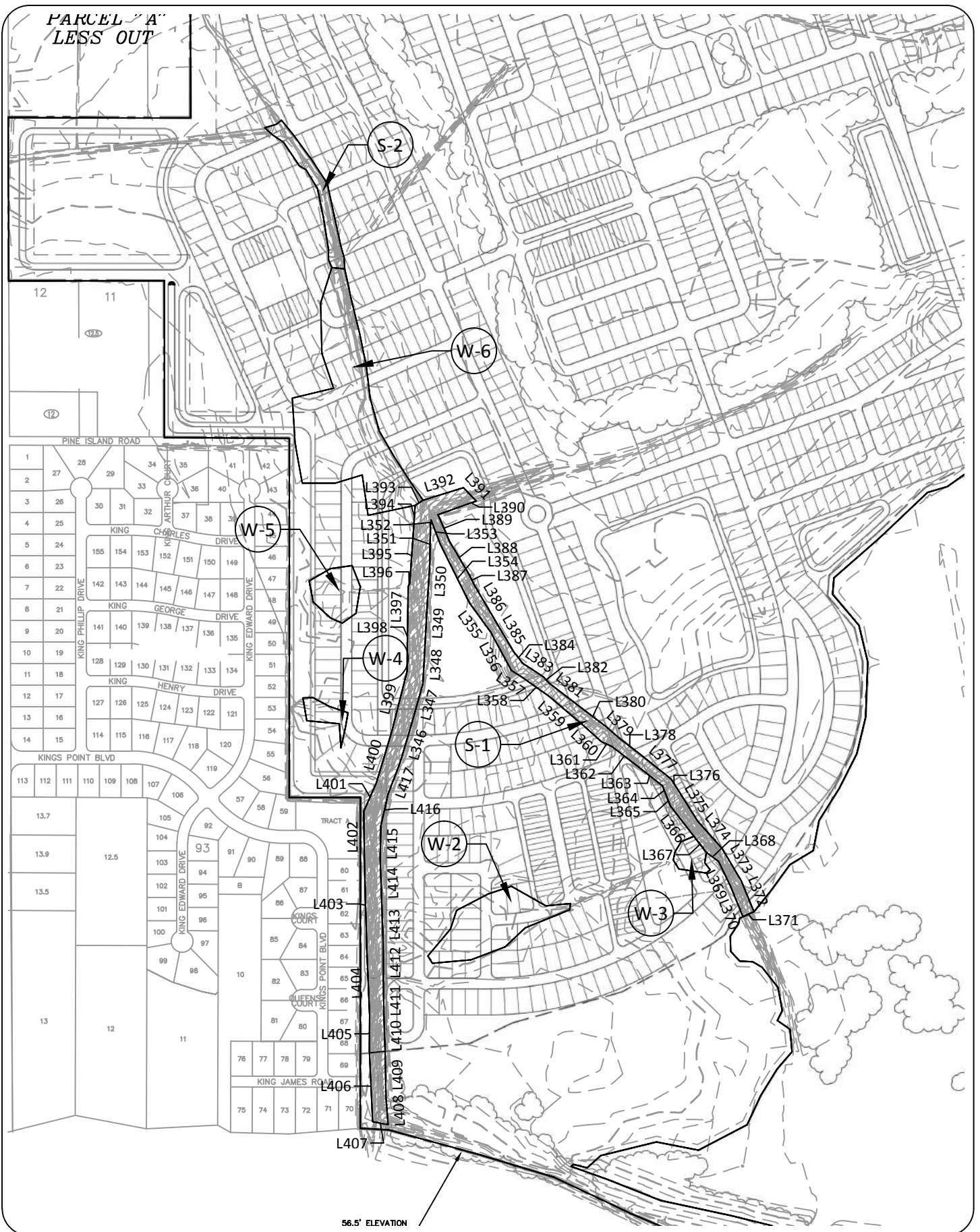
SCALE:
HORIZ. 1"=200'
VERT. 1"=20'



TOHO PRESERVE CORP PERMIT
W-2 TO W-6 PLAN

PARCEL "A"
LESS OUT

Plotted: July 9, 2015, 12:43:35 PM
Z:\PROJECTS\1007.006 Toho Preserve - Kindred Master Plan Update\Master Wetland Plan\Toho Pres Wetland Corp Permit - Plans.dwg

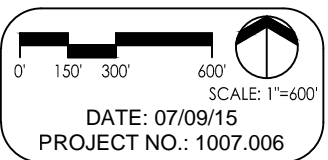
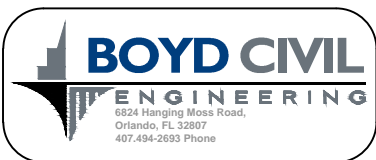
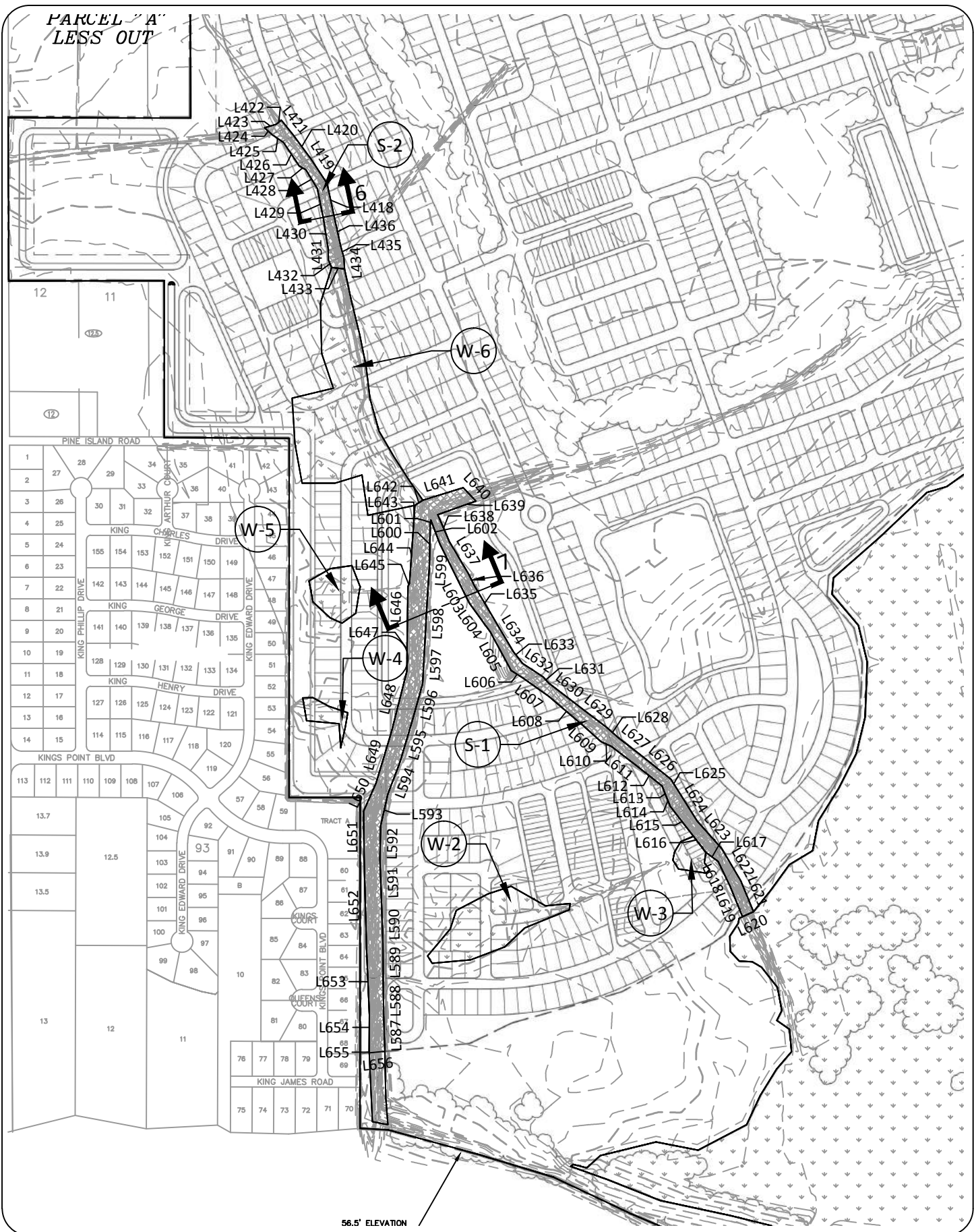


0' 150' 300' 600'
SCALE: 1"=600'
DATE: 07/09/15
PROJECT NO.: 1007.006

TOHO PRESERVE CORP PERMIT
S-1 PLAN

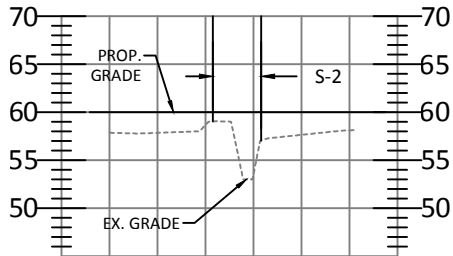
10

Plotted: July 9, 2015, 12:44:07 PM
Z:\PROJECTS\1007.006 Toho Preserve - Kindred Master Plan Update\Master Wetland Plan\Toho Pres Wetland Corp Permit - Plans.dwg

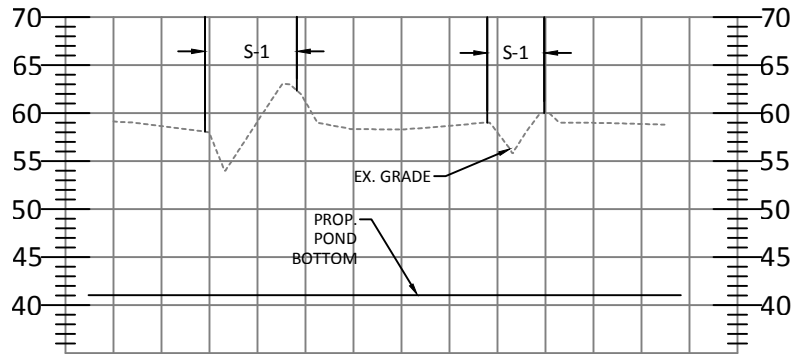


TOHO PRESERVE CORP PERMIT
S-1 & S-2 IMPACT PLAN

Plotted: July 9, 2015, 12:44:21 PM
Z:\PROJECTS\1007.006 Toho Preserve - Kindred Master Plan Update\Master Wetland Plan\Toho Pres Wetland Corp Permit - Plans.dwg

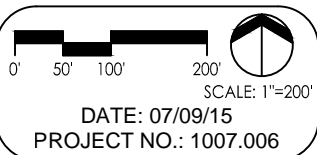
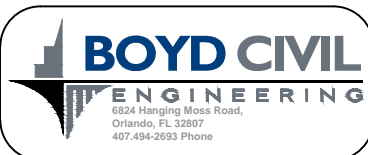


SECTION - 6



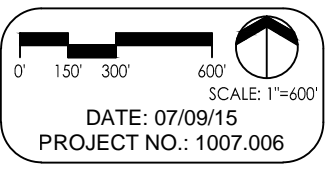
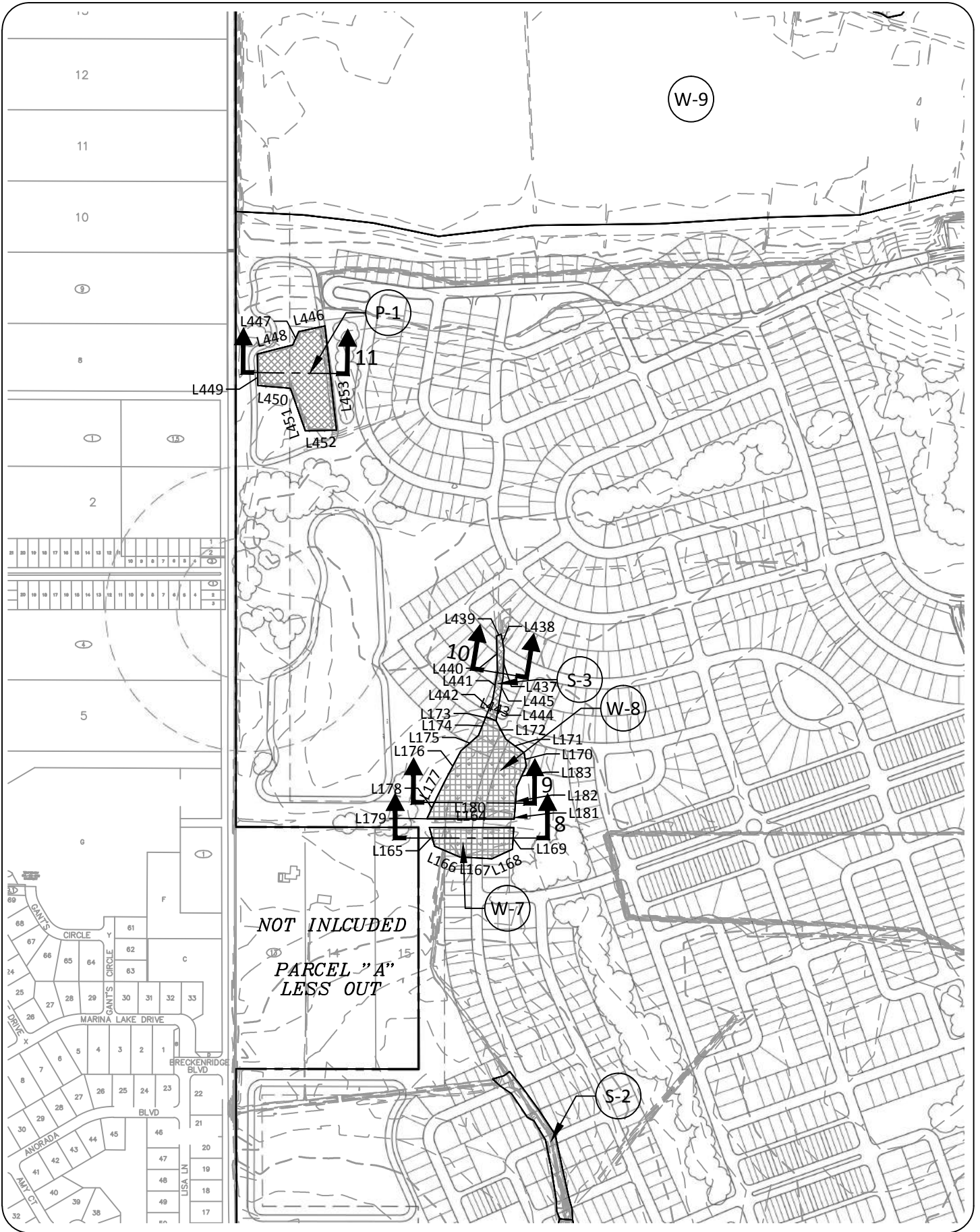
SECTION - 7

SCALE:
HORIZ. 1"=200'
VERT. 1"=20'



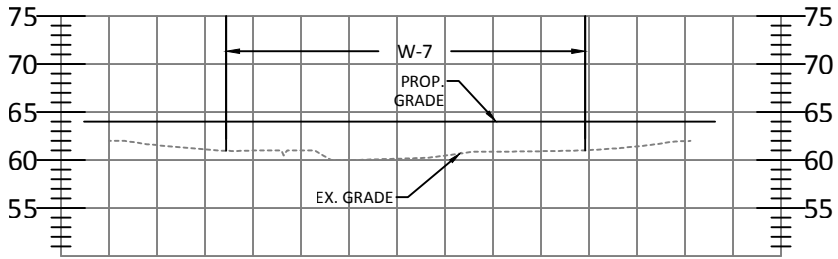
TOHO PRESERVE CORP PERMIT
S-1 & S-2 IMPACT SECTIONS

Plotted: July 9, 2015, 12:44:56 PM
Z:\PROJECTS\1007.006 Toho Preserve - Kindred Master Plan Update\Master Wetland Plan\Toho Pres Wetland Corp Permit - Plans.dwg

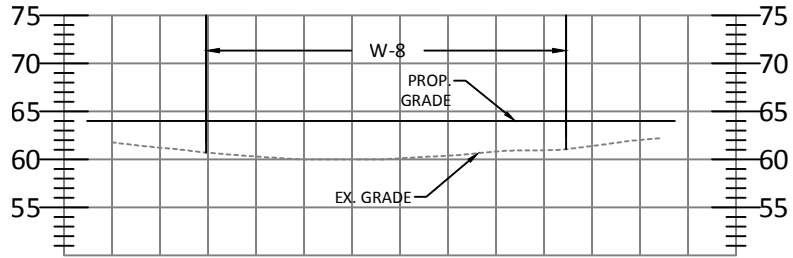


TOHO PRESERVE CORP PERMIT
W-7, W-8, S-3 & P-1 PLAN

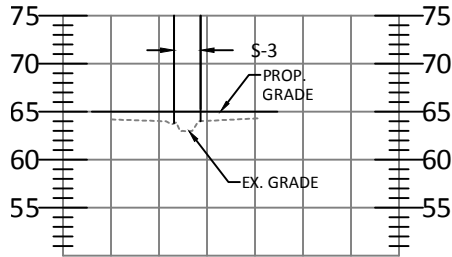
Plotted: July 9, 2015, 12:45:10 PM
Z:\PROJECTS\1007.006 Toho Preserve - Kindred Master Plan Update\Master Wetland Plan\Toho Pres Wetland Corp Permit - Plans.dwg



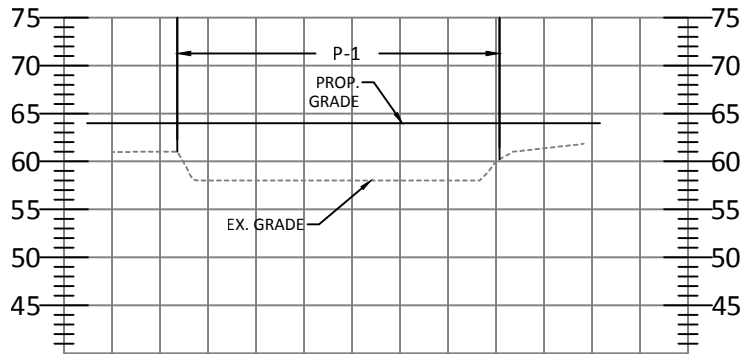
SECTION - 8



SECTION - 9

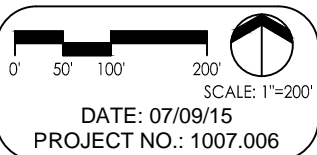
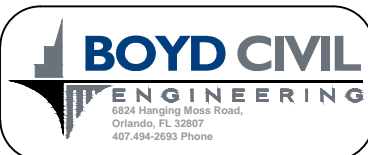


SECTION - 10



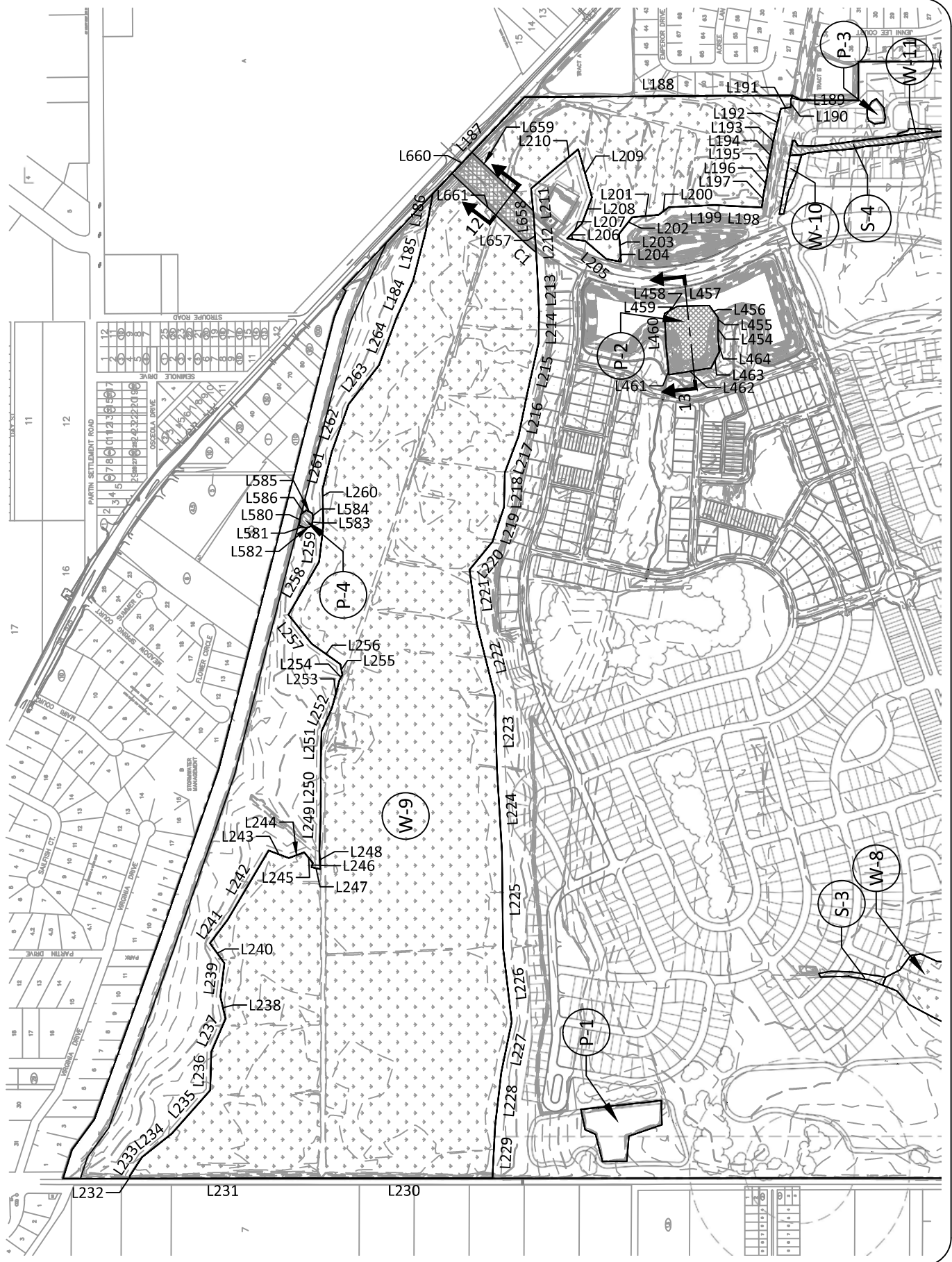
SECTION - 11

SCALE:
HORIZ. 1"=200'
VERT. 1"=20'



TOHO PRESERVE CORP PERMIT
W-7, W-8, S-3 & P-1
IMPACT SECTIONS

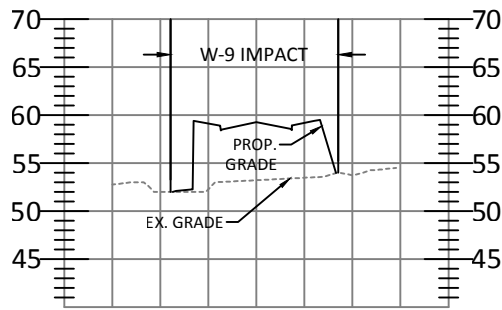
Plotted: July 9, 2015, 12:45:45 PM
 Z:\PROJECTS\1007.006 Toho Preserve — Kindred Master Plan Update\Master Wetland Plan\Toho Pres Wetland Corp Permit — Plans.dwg



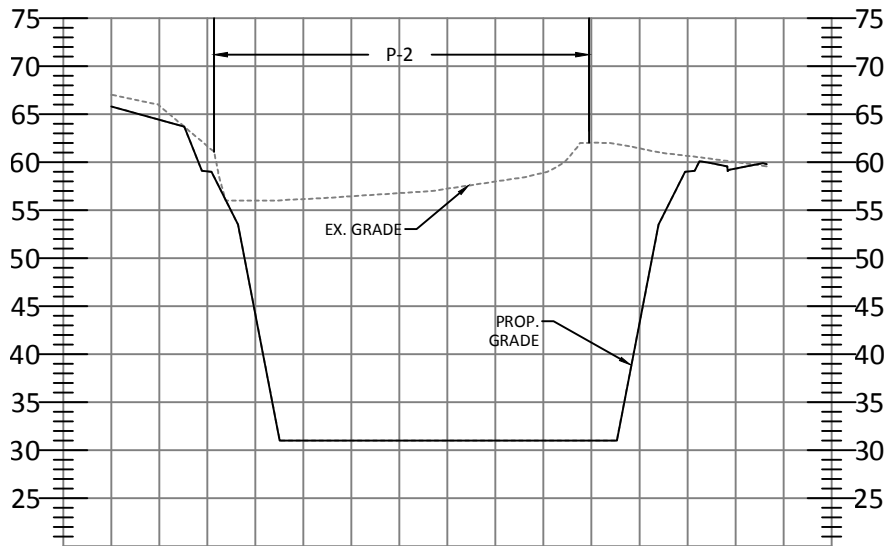
0' 200' 400' 800'
 SCALE: 1"=800'
 DATE: 07/09/15
 PROJECT NO.: 1007.006

TOHO PRESERVE CORP PERMIT
 W-9, P-2 & P-4 PLAN

Plotted: July 9, 2015, 12:45:59 PM
Z:\PROJECTS\1007.006 Toho Preserve - Kindred Master Plan Update\Master Wetland Plan\Toho Pres Wetland Corp Permit - Plans.dwg

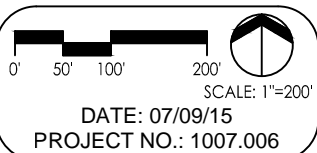


SECTION - 12



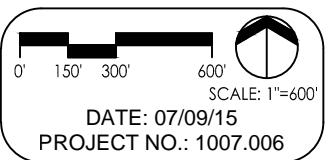
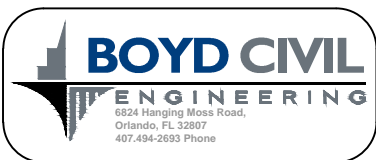
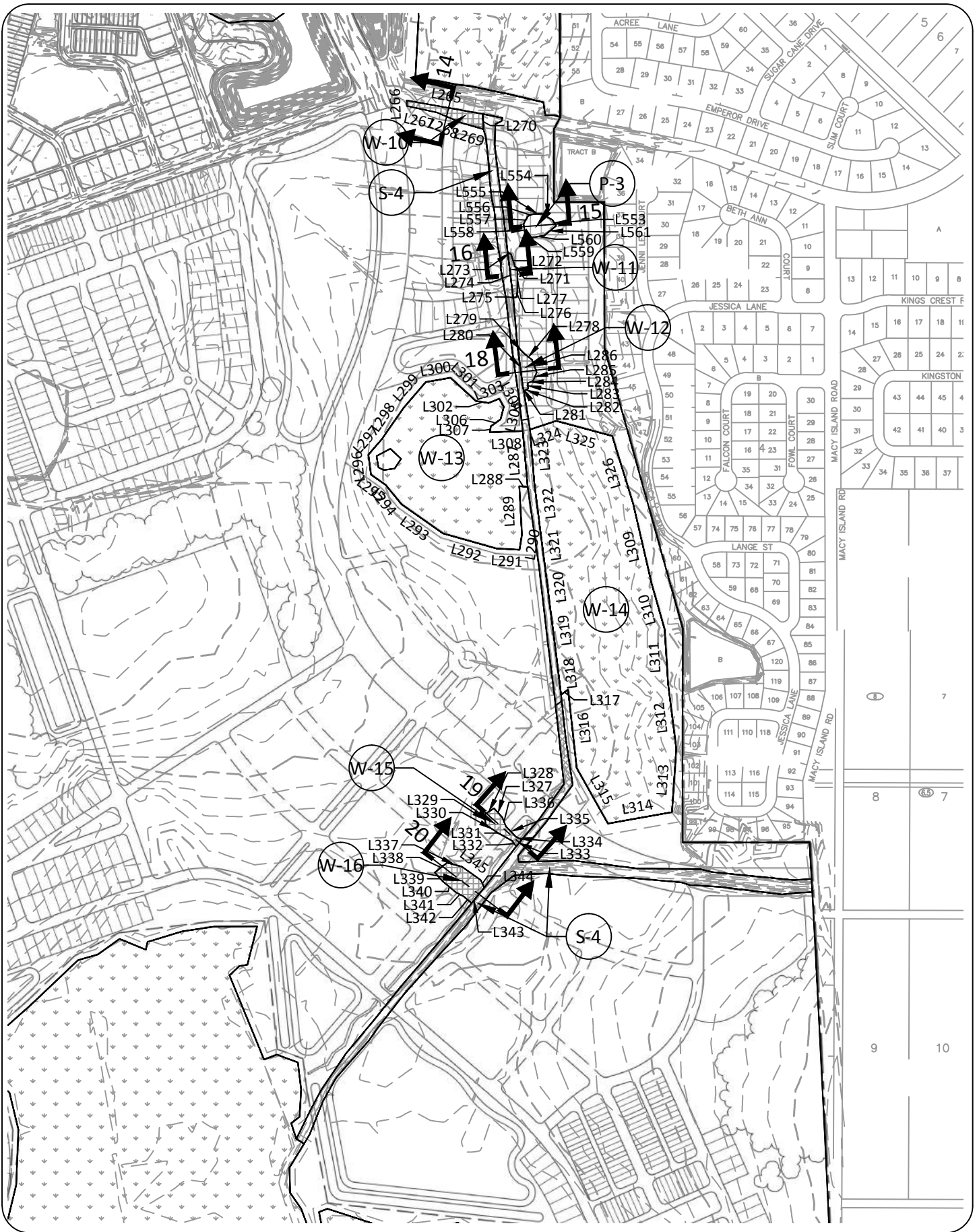
SECTION - 13

SCALE:
HORIZ. 1"=200'
VERT. 1"=20'



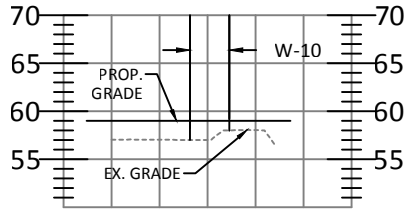
TOHO PRESERVE CORP PERMIT
W-9 & P-2 IMPACT SECTIONS

Plotted: July 9, 2015, 12:46:35 PM
Z:\PROJECTS\1007.006 Toho Preserve - Kindred Master Plan Update\Master Wetland Plan\Toho Pres Wetland Corp Permit - Plans.dwg

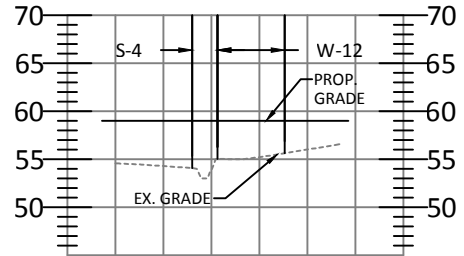


TOHO PRESERVE CORP PERMIT
W-10 TO W-16 & P-3 PLAN

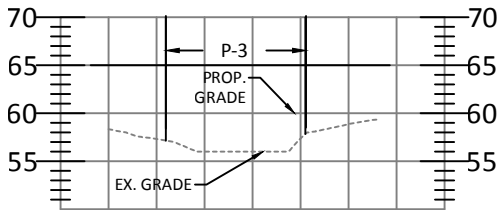
Plotted: July 9, 2015, 12:46:50 PM
 Z:\PROJECTS\1007.006 Toho Preserve - Kindred Master Plan Update\Master Wetland Plan\Toho Pres Wetland Corp Permit - Plans.dwg



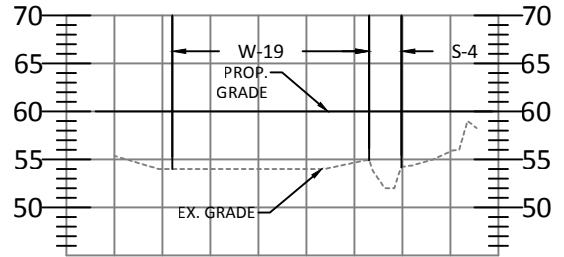
SECTION - 14



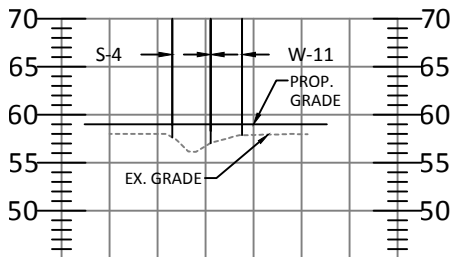
SECTION - 18



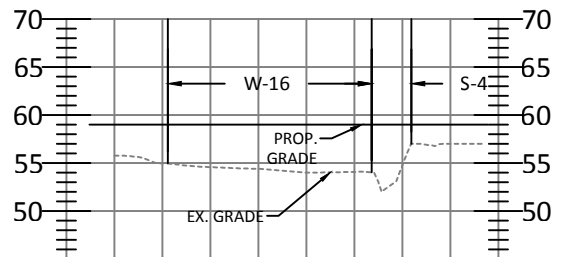
SECTION - 15



SECTION - 19

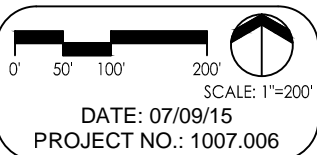


SECTION - 16



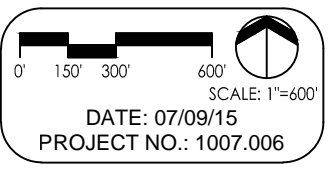
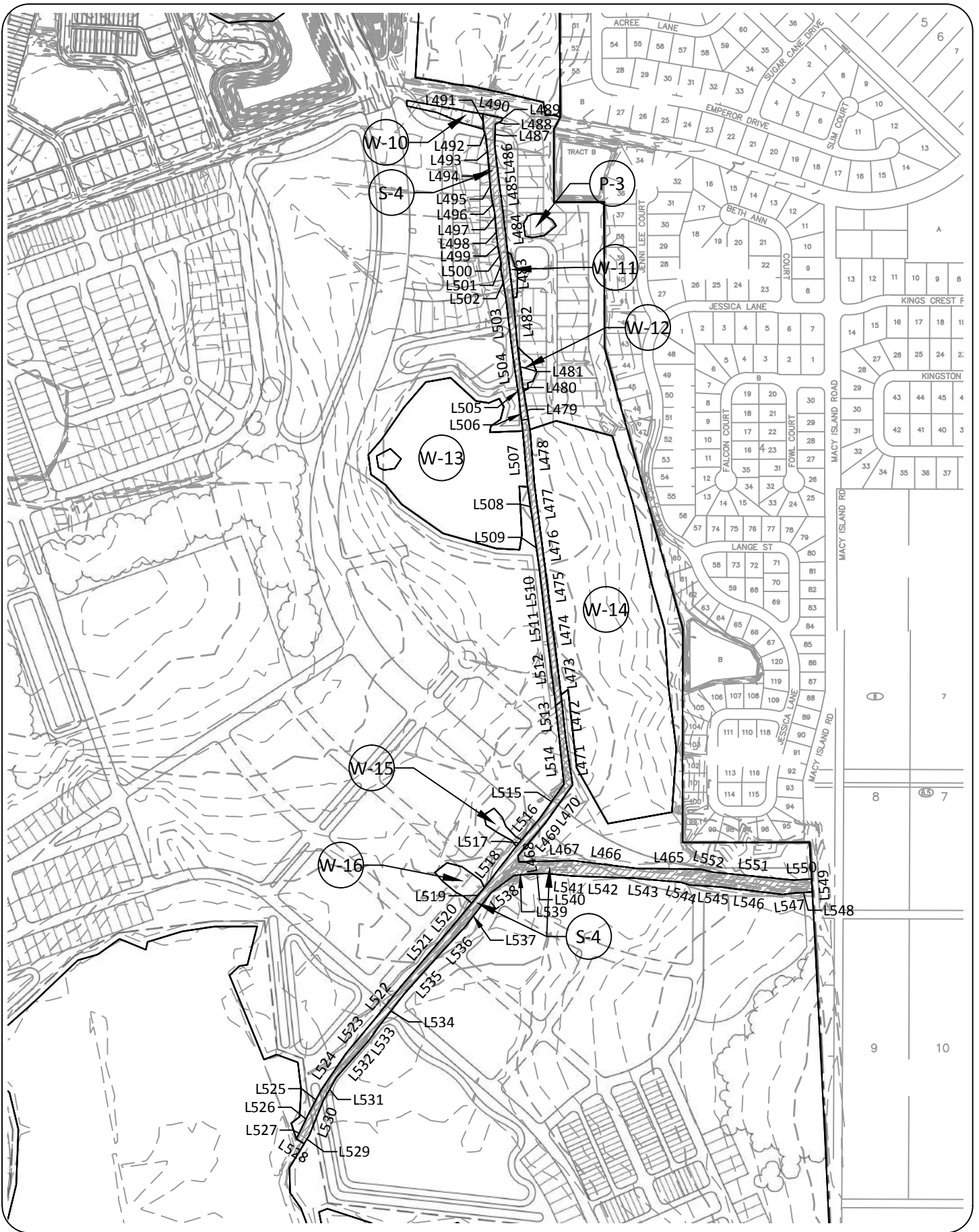
SECTION - 20

SCALE:
 HORIZ. 1"=200'
 VERT. 1"=20'



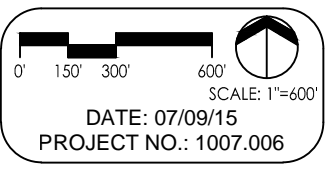
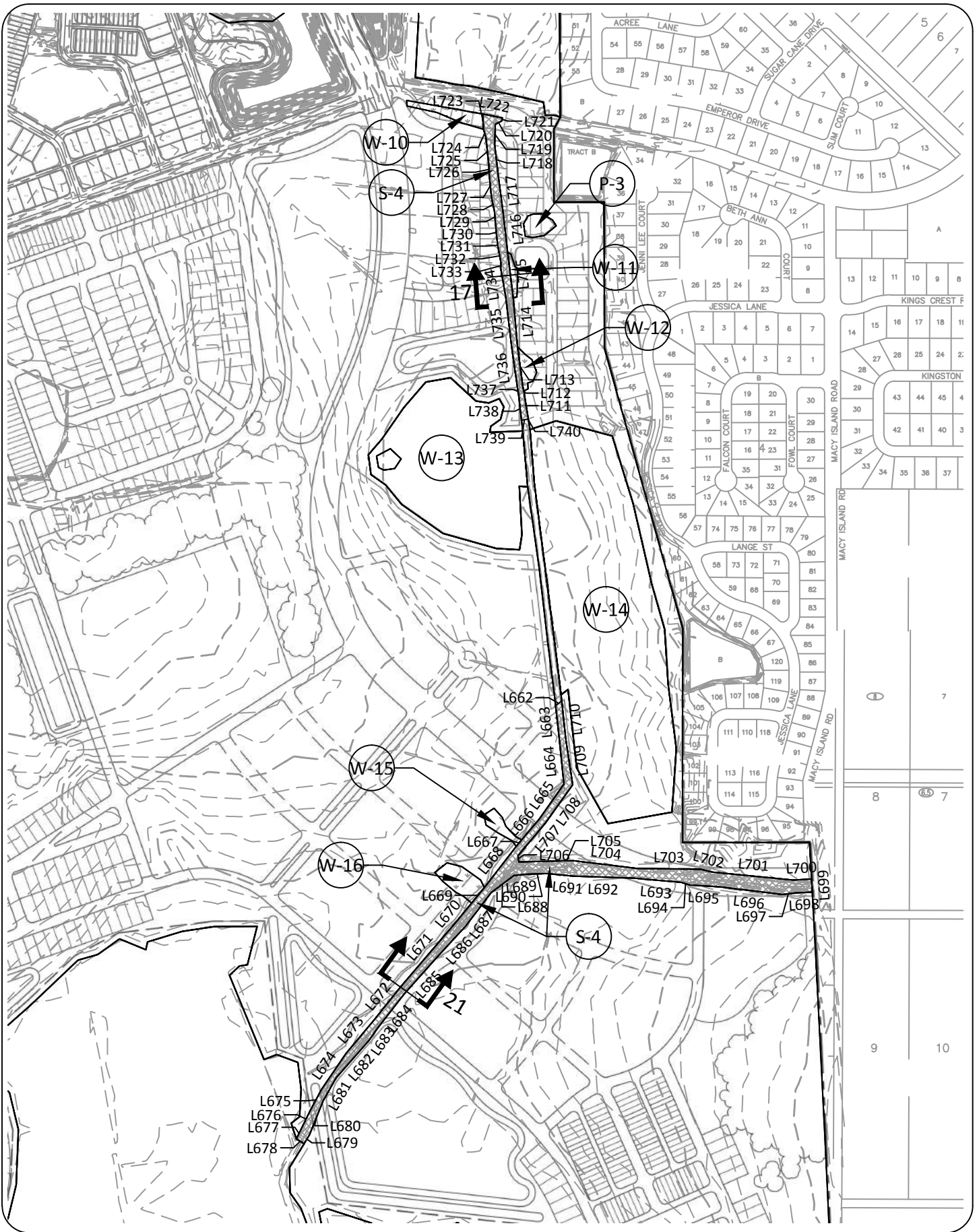
TOHO PRESERVE CORP PERMIT
W-10 TO W-16 & P-3
IMPACT SECTIONS

Plotted: July 9, 2015, 12:47:24 PM
Z:\PROJECTS\1007.006 Toho Preserve - Kindred Master Plan Update\Master Wetland Plan\Toho Pres Wetland Corp Permit - Plans.dwg



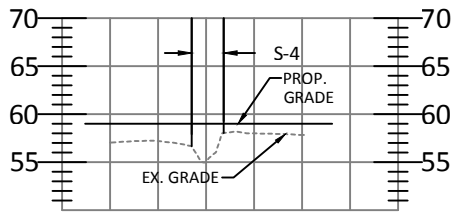
TOHO PRESERVE CORP PERMIT
S-4 PLAN

Plotted: July 9, 2015, 12:47:58 PM
Z:\PROJECTS\1007.006 Toho Preserve - Kindred Master Plan Update\Master Wetland Plan\Toho Pres Wetland Corp Permit - Plans.dwg

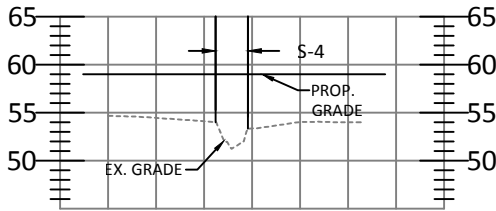


TOHO PRESERVE CORP PERMIT
S-4 IMPACT PLAN

Plotted: July 9, 2015, 12:48:12 PM
Z:\PROJECTS\1007.006 Toho Preserve - Kindred Master Plan Update\Master Wetland Plan\Toho Pres Wetland Corp Permit - Plans.dwg

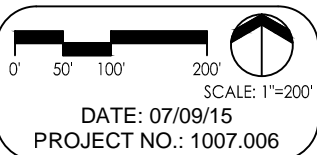


SECTION - 17



SECTION - 21

SCALE:
HORIZ. 1"=200'
VERT. 1"=20'



TOHO PRESERVE CORP PERMIT
S-4 IMPACT SECTIONS